

# HERE'S THAT A RAINY DAY

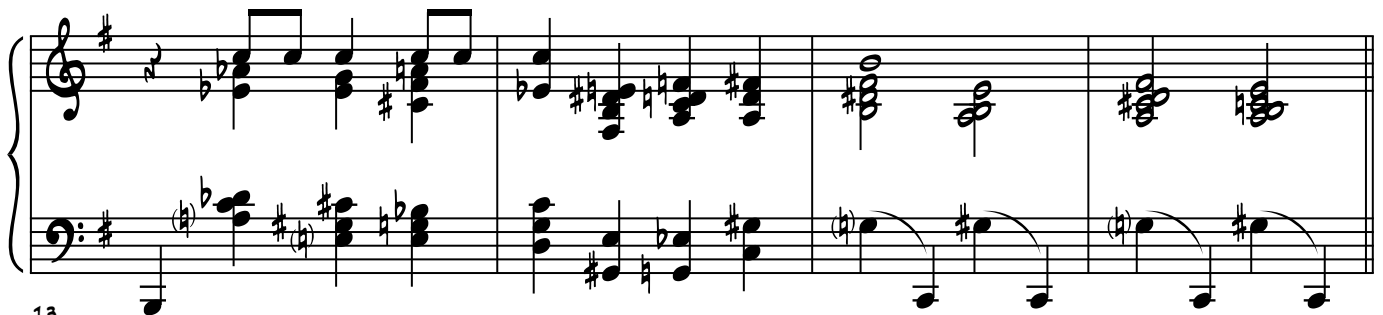
ARR. STEFANO TRAVAGLINI



5



9



13

Measures 17-20 of the musical score. The key signature is one sharp (F#). The melody in the right hand features a series of eighth and sixteenth notes, while the left hand provides a steady accompaniment of eighth notes. Measure 17 starts with a treble clef and a key signature of one sharp. The piece concludes with a double bar line at the end of measure 20.

17

Measures 21-24 of the musical score. The key signature is one sharp (F#). The melody in the right hand continues with eighth and sixteenth notes, and the left hand maintains the accompaniment. Measure 21 starts with a treble clef and a key signature of one sharp. The piece concludes with a double bar line at the end of measure 24.

21

Measures 25-28 of the musical score. The key signature is one sharp (F#). The melody in the right hand continues with eighth and sixteenth notes, and the left hand maintains the accompaniment. Measure 25 starts with a treble clef and a key signature of one sharp. The piece concludes with a double bar line at the end of measure 28.

25

Measures 29-32 of the musical score. The key signature is one sharp (F#). The melody in the right hand continues with eighth and sixteenth notes, and the left hand maintains the accompaniment. Measure 29 starts with a treble clef and a key signature of one sharp. The piece concludes with a double bar line at the end of measure 32.

29